



HPC TOOLKIT ON GBV RISK MITIGATION FOR UNICEF-LED CLUSTERS/AORS



What is GBV risk mitigation?

GBV risk mitigation (GBVRM) makes humanitarian services and responses safer and more effective by proactively identifying and mitigating the barriers and risks that women and girls face, and tackling their specific needs and rights. GBVRM should be apprehended in correlation with other cross-cutting themes, such as gender, inclusion of people with disabilities, localization, and Accountability of Affected Population (AAP).

Why does it matter?

Integrating GBV risk mitigation measures is a core responsibility of all humanitarian actors¹, as it significantly improves the safety and well-being of crisis-affected populations. Preparing for and delivering aid and services in the safest and most dignified way allow more people to access better services. Failing to address GBV in emergencies compromises the effectiveness of emergency preparedness and response across all sectors.

How should this toolkit be used?

This HPC toolkit is a compilation of the top tools that clusters can use to strengthen GBVRM throughout the HPC. It includes practical tools for essential actions and concrete examples of integration. This compilation was the result of a thorough consultative process with partners.

ACTIVITIES & SERVICES

- which
- are safe and accessible
- proactively identify, and take action to reduce, the barriers and risks faced by women and girls
- include regular consultations with women and girls
- work closely with GBV services (e.g. for referrals)

Essential Links

- [GBV Risk Mitigation in UNICEF-led Clusters/AoRs](#)
- [Overarching Picture of Cross-Cutting Themes and Tools](#)
- [Frequently Asked Questions](#)



IASC Guidelines for Integrating GBV Interventions in Humanitarian Action - Thematic Area Guides




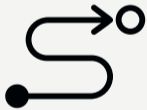


“
GBV risk mitigation is a key component of quality programming and contributes to sectors’ ability to meet their own core standards and targets.
”

¹ Centrality of Protection, Accountability to Affected Populations, Core Commitments for Children etc.



NAVIGATE THROUGH THE TOOLKIT

The toolkit is organized into six pages of tools. Click on a phase below to reach the relevant tools. Some tools can be used across different HPC phases represented by the icons below.

Phase	Top GBV Risk Mitigation Activities
 Overarching (Across All Phases)	<ul style="list-style-type: none"> <input checked="" type="checkbox"/> Proactively engage women and girls and reflect their opinions into all HPC phases. <input checked="" type="checkbox"/> Increase meaningful partnerships between Women-Led Organizations (WLOs) and clusters/AoRs.
 Needs Assessment & Analysis (HNO Process)	<ul style="list-style-type: none"> <input checked="" type="checkbox"/> Identify the barriers and risks faced by women and girls, and their specific needs, and integrate this analysis in the HNOs. <input checked="" type="checkbox"/> Meaningfully and safely consult women and girls. <input checked="" type="checkbox"/> Partner with WLOs to conduct needs assessments. <input checked="" type="checkbox"/> Where a face-to-face consultation is not possible, seek information from WLOs.
 Strategic Planning (HRP Process)	<ul style="list-style-type: none"> <input checked="" type="checkbox"/> Include GBV risk mitigation measures that correspond to the HNO findings. <input checked="" type="checkbox"/> Include sectoral objectives and indicators that reflect the GBVRM narrative. <input checked="" type="checkbox"/> At very minimum include a safety audit and training of frontline workers on GBV referrals and GBVRM. <input checked="" type="checkbox"/> Include capacity-strengthening of WLOs in HRPs.
 Implementation	<ul style="list-style-type: none"> <input checked="" type="checkbox"/> Work with WLOs. <input checked="" type="checkbox"/> Work with GBV partners and services (e.g. for safe referrals). <input checked="" type="checkbox"/> Use safety audits and tweak the project interventions based on findings.
 Measuring, Monitoring and Evaluation	<ul style="list-style-type: none"> <input checked="" type="checkbox"/> Integrate GBVRM into the project vetting criteria and the country-based pool funding allocation strategy. <input checked="" type="checkbox"/> Include GBVRM activities in monitoring mechanisms (e.g. 5Ws).
 Training & Institutionalization	<ul style="list-style-type: none"> <input checked="" type="checkbox"/> Continuously build the capacity of partners in GBVRM jointly with GBV actors. <input checked="" type="checkbox"/> Include mandatory trainings on GBV referrals and PSEA for all. <input checked="" type="checkbox"/> Integrate GBVRM into cluster's knowledge management plans and handovers.

Type of tools:

Core guidance

Practical examples

Further guidance

Sector-specific

Cross-sector



OVERARCHING DOCUMENTS

Tools that can be used throughout all phases of the HPC.

5 Minimum Commitments to Safety and Dignity in WASH

Core guidance

Sector-specific



Why use it?

To improve the quality and efficiency of WASH response through key commitments on gender, GBV, child protection, disability, and age.

Case Study - GBV Risk Mitigation Integration into the HPC in the DRC (2020-2021)

Practical examples

Cross-sector



Why use it?

To learn from DRC's experience in implementing GBVRM across all of UNICEF-led clusters and AoRs in HNOs, HRP and implementation.

Quality Checklist on AAP, Disability, GBV Risk Mitigation and Localization for HNOHRP

Core guidance

Cross-sector



Why use it?

To ensure that GBV risk mitigation and other cross-cutting themes are meaningfully integrated into the HNOs and HRPs.

WASH Cluster Good Practices across HPC Phases

Practical examples

Sector-specific



Why use it?

To learn from successful practical examples of GBVRM integration across HPC phases of WASH programming in South Sudan and Afghanistan.

Matching Matrix for WASH - Risks, Barriers, GBVRM Measures, and Matching Indicators

Core guidance

Sector-specific



Why use it?

To match barriers and risks faced by women and girls with GBVRM measures and indicators based on existing good practice across countries.

Women in Displacement Website

Further guidance

Cross-sector



Why use it?

To access useful case studies and tools to enhance women and girls' participation in decision-making and governance structures to improve their sense of safety and to mitigate the risks of GBV in humanitarian settings.

WASH-GBV Checklist for Essential Actions

Core guidance

Sector-specific

🔗 p. 39a



Why use it?

To mainstream GBV into WASH throughout the HPC.

“
GBV risk mitigation must be reflected in all HPC phases - supported by tools and evidenced by specific integrated activities.
”



NEEDS ASSESSMENT & ANALYSIS

Tools to collect and analyze data on the risks and barriers faced by women and girls, as well as their specific needs.

Barrier Analysis (Availability, Accessibility, Acceptability and Quality Framework)

Core guidance

Cross-sector



Why use it?

To identify the potential barriers that impede access to services and that may increase GBV risks.

GBV Secondary Data Review Template

Further guidance

Cross-sector



Why use it?

For WASH staff to incorporate information on GBV-related risks and barriers into their sectoral SDRs.

GBV Risk Analysis Guidance

Core guidance

Cross-sector



Why use it?

For clusters and IMO to identify and analyze the specific risks and barriers faced by women and girls across sectors (guidance + list of indicators).

Gender Analysis Template

Further guidance

Cross-sector

[p. 32-39](#)



Why use it?

To comprehensively analyze the specific needs of women and girls - which is the basis of GBVRM.

Example of HNO Good Practices (2021 Case Study)

Practical examples

Sector-specific

[p. 4](#)



Why use it?

To learn from sectoral best practices in 2021 HNOs and get inspired for the following HPC.

Gender Analysis per Sector

Further guidance

Sector-specific

[p. 353-359](#)



Why use it?

To conduct gender analysis in each sector - which is the basis of GBVRM.

WASH Safety Index

Practical examples

Sector-specific



Why use it?

To calculate severity by capturing indicators related to safety, protection, and accountability for various vulnerable groups, including women and girls. (Note that this tool is about severity calculations whereas most other sources are about writing a narrative).

“
Women and children face violence and other protection risks when access to WASH facilities is hampered by risks and barriers, and/or when design is not adapted to their specific needs.
”



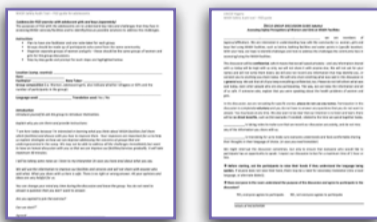
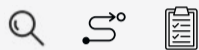
STRATEGIC PLANNING

Tools to plan responses that fully tackle the risks and barriers faced by women and girls, and address their specific needs. **Important note:** Safety audits can be used throughout the HPC.

Guides for Focus Group Discussions with 1) Adolescent Girls and 2) Women

Core guidance

Sector-specific



Why use it?

To learn how to conduct safe and ethical Focus Group Discussions with 1) adolescent girls and 2) adult women.

WASH Safety Observation Checklist

Practical examples

Sector-specific



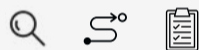
Why use it?

To learn from a specific case how to conduct observations and discussions with communities on safety.

Safety Audits - 'How-to' Guide and Safety Audits Mapping (2019)

Core guidance

Cross-sector



Why use it?

For non GBV staff to learn how to conduct safety audits, i.e. to identify observable risks and assess specific vulnerabilities of women, girls, boys and men. (How-to guide + mapping of safety audits).

Gender-Responsive WASH - Key Elements for Effective WASH Programming (2017)

Further guidance

Sector-specific



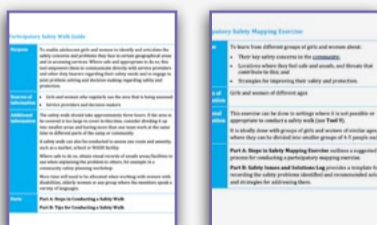
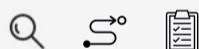
Why use it?

To make WASH programs gender sensitive and mitigate GBV risks.

Participatory Safety Walk Guide and Safety Mapping Exercise

Core guidance

Cross-sector



Why use it?

To enable adolescent girls and women to identify safety concerns they face in their areas via a 3 hour walk, or through a safety mapping exercise when conducting a walk is not possible.

Example of HRP Good Practices (2021 Case Study)

Practical examples

Sector-specific



Why use it?

To learn from sectoral best practices in 2021 HRPs and get inspired for the following HPC.

“
GBV prevention and mitigation
are inherent parts of humanitarian
response across sectors (IASC).
”



IMPLEMENTATION

Tools to effectively integrate GBV risk mitigation into sectoral practice with the view of improving programming.

How to Support GBV Survivors When a GBV Actor is not Available (Pocket Guide)

Core guidance

Cross-sector

Sector-specific



Why use it?

For all practitioners to be able to support and refer a GBV survivor in a context where there is no GBV actor.

Mini Guide for Integrating MHM Into Humanitarian Response

Further guidance

Cross-sector



Why use it?

To integrate and mainstream MHM across all sectors.

Examples of GBVRM Implementation Good Practices (Case Studies)

Practical examples

Sector-specific



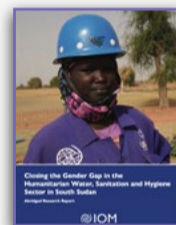
Why use it?

To learn from countries' experience in implementing GBVRM into sectors.

Closing the Gender Gap in the Humanitarian WASH Sector in South Sudan

Further guidance

Sector-specific



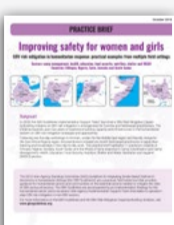
Why use it?

To create better conditions for equitable participation of women and girls in WASH activities and decision-making.

Improving Safety for Women and Girls (Practical Highlights)

Practical examples

Cross-sector



Why use it?

To learn from practical field settings examples that successfully implemented GBV risk mitigation in humanitarian responses.

GWC Gender-related Resources for Improved WASH Programming

Further guidance

Sector-specific



Why use it?

To access compendium of materials on gender-sensitive WASH programming.

Checklist for MHM in Emergencies - Challenges and Possible Responses

Further guidance

Sector-specific



Why use it?

To identify main challenges with regards to MHM in emergencies and recommended responses.

“ Always talk to a GBV specialist first to understand what GBV services are available in your area. ”



MONITORING AND EVALUATION

Tools to monitor and evaluate the implementation of GBV risk mitigation into sectoral work.

Tip Sheet: List of GBVRM Indicators

Core guidance

Cross-sector



Why use it?

To identify core indicators for the HRP, HAC, and other partnerships/planning documents, to be able to monitor and evaluate GBV risk mitigation and safe, accessible, user-centered and effective programming across sectors.

Assessing Improved Safety and Security from GBV for Women and Girls in WASH Facilities

Practical examples

Sector-specific



Why use it?

To learn from a concrete example how to measure safety of WASH facilities (report + tool).

Tip Sheet: Consulting With Women and Girls on Existing GBVRM Measures

Core guidance

Cross-sector



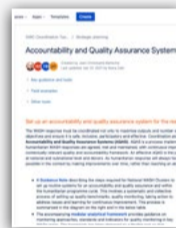
Why use it?

To consult with women and girls on whether the GBV risk mitigation measures are effectively reducing barriers to services and helping them feel safer.

WASH Accountability and Quality Assurance Guidance

Further guidance

Sector-specific



Why use it?

To measure safety, participation and inclusiveness of WASH interventions (GBVRM, AAP, gender, and disability) including key indicators.

GBVRM Measurement Site

Core guidance

Cross-sector



Why use it?

To integrate measurement of GBVRM their M&E processes.

GBVRM narrative in the HRP must be matched with corresponding indicators to monitor the implementation of GBVRM measures into sectoral work.

WASH GBV Checklists

Practical examples

Sector-specific



Why use it?

To assess if/how partners are mainstreaming GBV into their WASH activities at community level.



TRAINING AND INSTITUTIONALIZATION

Tools to brief and train clusters and members on GBVRM, and institutionalize good practices.

Short Video on the Effectiveness of GBV Risk Mitigation

Core guidance

Cross-sector



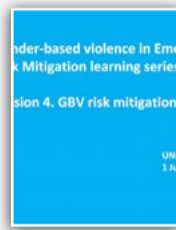
Why use it?

To use in trainings or briefings to show what GBVRM is, and why it is essential for effective, safe, and user-centered programming.

Powerpoint Presentation on the Importance of GBVRM Across Sectors (2021)

Core guidance

Cross-sector



Why use it?

For advisors to use during trainings and briefings to clusters to raise awareness on the importance of integrating GBVRM.

Webinar on Integrating GBV Risk Mitigation and Safe Referrals

Core guidance

Cross-sector



Why use it?

To learn how to integrate GBV risk mitigation and how to support a survivor of GBV through safe referrals (45 mn).

Powerpoint Presentation on Monitoring and Reporting GBVRM (2021)

Core guidance

Cross-sector



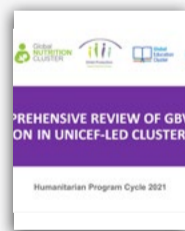
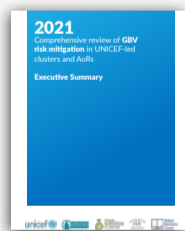
Why use it?

To train/brief on how to monitor GBV risk mitigation in programs across sectors.

Review of GBVRM Integration into HPC 2021

Core guidance

Cross-sector



Why use it?

To show how GBVRM was integrated into HNOHRP in 2021 with good practices and gaps (executive summary + deck). Some slides can be used for trainings.

E-module on Monitoring GBV Risks in Nutrition Programming: The Implementation of Safety Audits and Safe Consultations

Core guidance

Cross-sector



Why use it?

To identify and mitigate GBV risks in sectoral work using an observation tool and conducting safe consultations with women (can be applied to all sectors) (1 hour).

Report on GBVRM integration in WASH in HPC 2021

Core guidance

Sector-specific



Why use it?

To show how GBVRM was integrated into HNOHRP in 2021. Contains examples of good practices and highlights gaps to address.

Webinar on Integrating GBV and Nutrition Programming - Global Guidance and Country Experience (2020)

Core guidance

Cross-sector



Why use it?

To learn how to reinforce GBVRM into sectoral work using safety audits and other measures piloted in South Sudan (can be applied to all sectors) (1 hour).



TRAINING AND INSTITUTIONALIZATION (CONTINUED)

Tools to brief and train clusters and members on GBVRM, and institutionalize good practices.

Short Video on Responding to a Disclosure of a GBV Incident

Core guidance

Cross-sector



Why use it?

For non GBV actors to learn how to respond to a disclosure of a GBV incident in humanitarian settings (4 minutes).

Gender, Violence and WASH

Further guidance

Sector-specific



Why use it?

To make WASH gender sensitive and safe from violence. (It contains various tools, case studies and video for training or implementation).

Overview and Records of 2021 GBVRM Stocktacking Workshop

Further guidance

Cross-sector



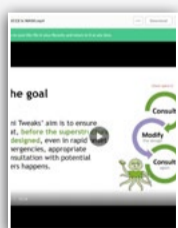
Why use it?

To access presentations and recordings from a series of GBVRM workshops conducted in 2021 including: GBVRM in HRP and HNO, implementing and monitoring GBVRM, and the role of women-led organizations in clusters' work.

Webinar on Engaging Users in the Design of WASH Facilities

Further guidance

Sector-specific



Why use it?

To learn, through specific examples, how to conduct appropriate consultations with users, before facilities are designed, even in rapid onset emergencies (also good for design of humanitarian innovation) (55 minutes).

Podcast on GBV Risk Mitigation into Global WASH Cluster (2020)

Further guidance

Sector-specific



Why use it?

To learn about the initiatives of the Global WASH cluster to integrate GBVRM into its work. (15 minutes).

“
GBV risk mitigation is about proactively engaging affected communities, especially women and girls, to better capture their needs and opportunities.
”

