



HOW-TO: A PRACTITIONER-FRIENDLY GUIDE ON HOW TO INTEGRATE GBV RISK MITIGATION INTO PROGRAM DESIGN & IMPLEMENTATION



ALL sectors must work to mitigate the risks associated with their programs to ensure that women, girls, and other vulnerable groups can safely access and use them.

The following brief is part of a series of sequenced step-by-step briefs on how to integrate GBV risk mitigation across different elements of the Humanitarian Program Cycle (HPC). This brief covers integrating GBV risk mitigation into program design and implementation.

There are **MULTIPLE ENTRY POINTS** for understanding where and how GBV risk mitigation strategies/actions can be implemented in humanitarian action.

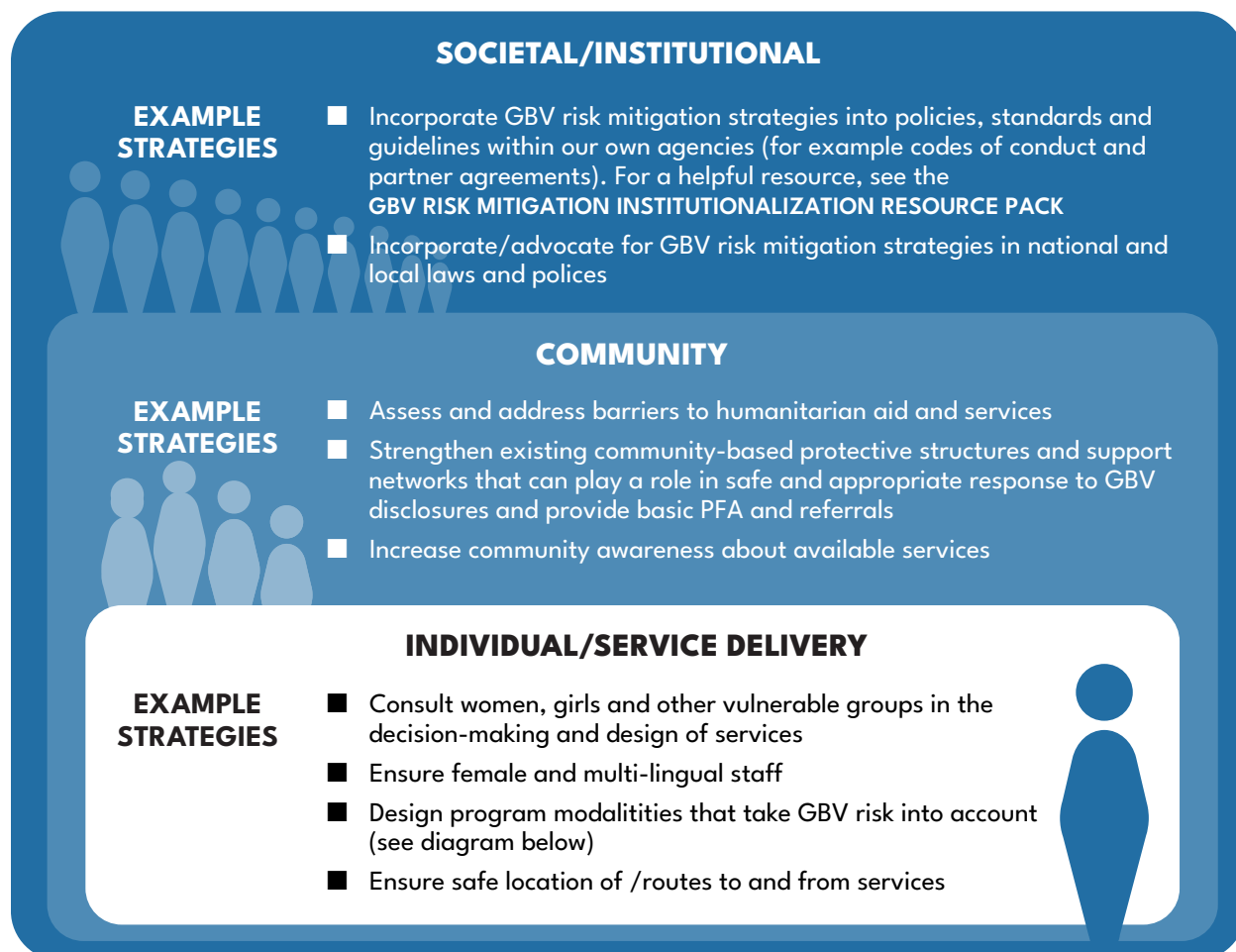
- Understanding the risks that different groups within an affected population may be facing allows for the **DESIGN OF PROGRAMMING TO BETTER AND MORE SAFELY MEET THEIR NEEDS**.
- Successful implementation activities need to be determined by the **CONTEXT**. GBV risk mitigation strategies provide a framework to identify where risk mitigation actions should be implemented based on context.

WHY INTEGRATE GBV RISK MITIGATION STRATEGIES INTO PROGRAM DESIGN AND IMPLEMENTATION

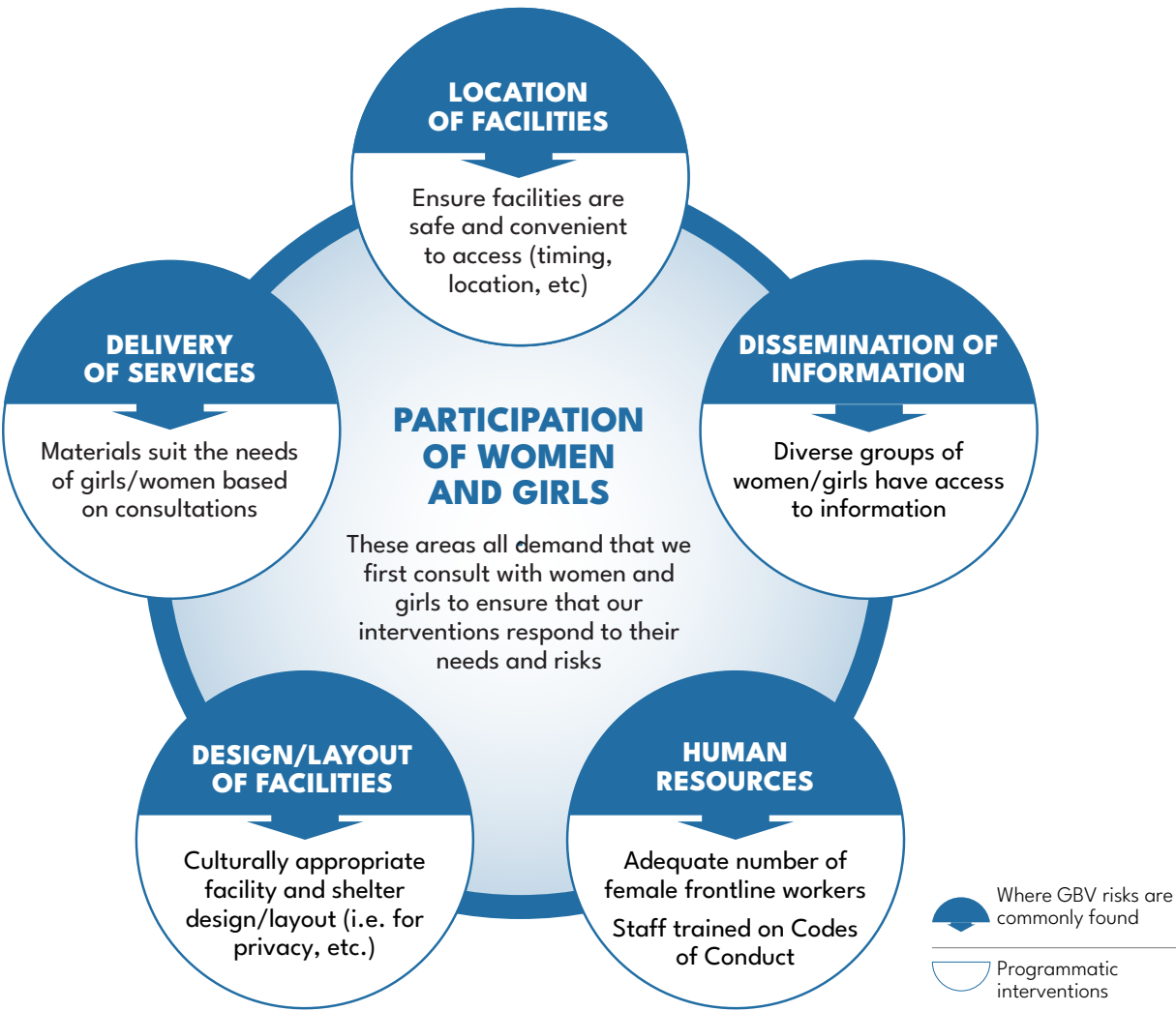
GBV risk mitigation is just good programming. Ensuring that our programs are safe and accessible to all, including and especially the most vulnerable or marginalized within a community, is not “additional” work—rather, ensuring that GBV risk mitigation actions are integrated into every sector’s programs should result not only in safer programming overall, but in better sector-specific outcomes.

HOW TO INTEGRATE GBV RISK MITIGATION STRATEGIES INTO PROGRAM DESIGN AND IMPLEMENTATION

GBV risks can occur across all levels of intervention [societal/institutional, community, and individual/service delivery] and therefore there are opportunities at each of these levels to engage in GBV risk mitigation. For examples of strategies that can be incorporated at each level, see below.



The diagram below indicates areas where GBV risks are commonly found and the general **TYPES** of interventions that can help mitigate those risks. To ensure that interventions are as effective as possible in the context in which they are to be implemented, it is critical to include GBV risk related questions in every sector’s **ASSESSMENTS**.



The Thematic Area Guides (TAGs) of the GBV Guidelines include concrete, standard GBV risk mitigation measures that you can use in your sector.

For examples of sector-specific GBV risk mitigation strategies in practice [SEE YOUR SECTOR PAGE](#).



CAMP
COORDINATION
& CAMP
MANAGEMENT



CHILD
PROTECTION



EDUCATION



FOOD SECURITY &
AGRICULTURE



HEALTH



HOUSING, LAND,
AND PROPERTY



HUMANITARIAN
OPERATIONS
SUPPORT
SECTORS



HUMANITARIAN
MINE ACTION



LIVELIHOODS



NUTRITION



PROTECTION



SHELTER,
SETTLEMENT, AND
RECOVERY



WATER,
SANITATION, AND
HYGIENE